

The background features stylized yellow dahlia flowers in the corners. A central illustration of a dahlia branch with three flowers is positioned behind the main title.

MEADOWLARK

NORTH FORK

IS A NEW CONCEPT WINERY DESTINATION LOCATED ON THE NORTH FORK OF LONG ISLAND.
THE MEADOWLARK'S OFFERINGS STEM FROM THE MACARI VINEYARDS' COMMITMENT TO CELEBRATING
A LOVE OF LIFE AND A REGENERATIVE FUTURE INSPIRED BY THE REGION'S RURAL HERITAGE.



The Meadowlark Lawn

The Meadowlark Lawn is framed by grass plantings, trees, and offers vineyards views. Its unique positioning provides unobstructed views amongst the 20 acres of pollinator gardens. The Lawn is an open-air North Fork experience created for special occasions, perfect for a standard tent. The green space is an available tableau and can be utilized independently or easily combined with the Perch Building. This combination tailors to guests looking to share multiple experiences during one event. It is a unique garden destination for dinner celebrations, launch events, and weddings for up to two hundred seated for dinner.

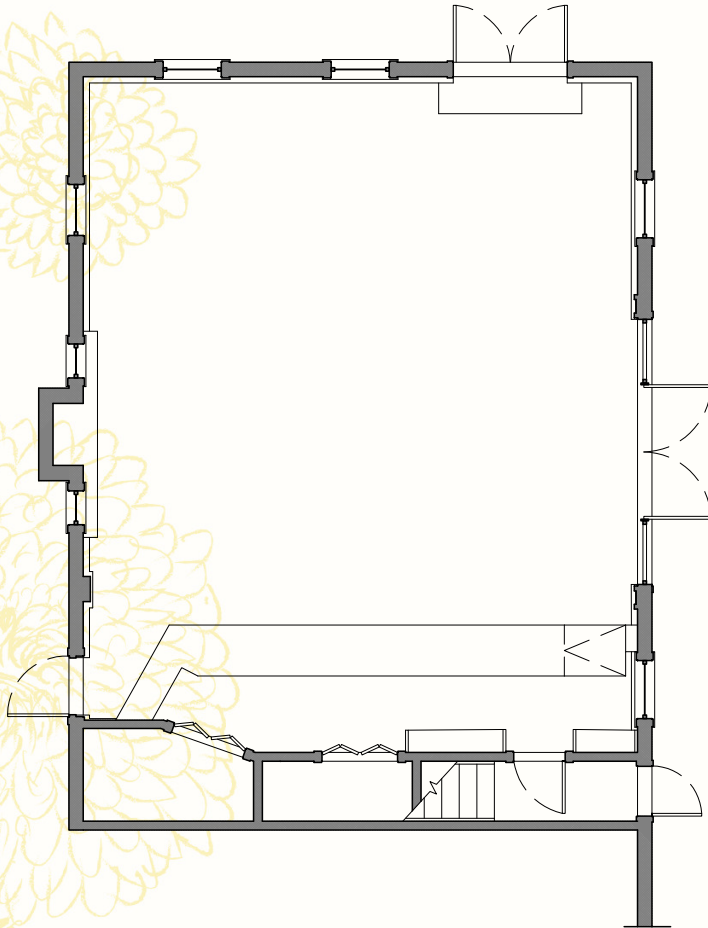


Wine Bar

The Wine Bar is a modified tasting room that offers unique selections of the Macari portfolio by the glass or bottle. We focus on experimental, limited wines, and innovative winemaking techniques available only at the Meadowlark property. This wine bar is where we invite guests to explore new tastes, relax in our gardens, and enjoy the evolving seasons. It is a perfect year-round destination for get-togethers, unique happenings, and reveling special moments in an unhurried environment.

The Wine Bar is a bright and Airy Library that offers 812 square feet of interior space, including a 24'L built-in copper-topped bar. The adjacent open-air garden with a bluestone patio adds an extra 900 sq. ft. of usable space with outdoor lighting, modern benches, tables, and modern seating on the lawn. The rental comes with access to a 300 sq. ft. conference room on the second floor, which can be converted into a private dressing room, a production room, or a satellite office. It's ideal for cocktail parties or receptions, corporate retreats, team building activities and buffet style meals.





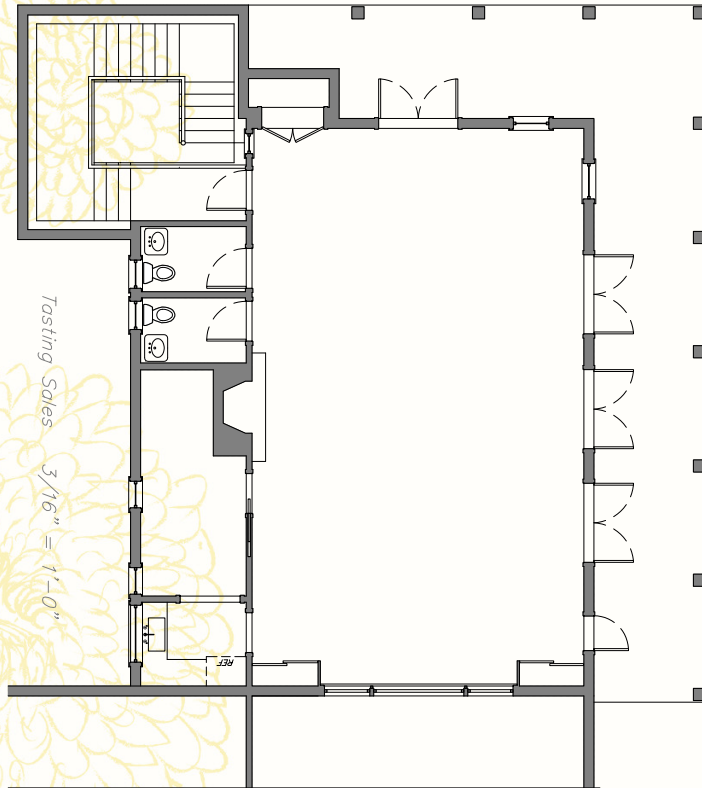
ACCOMODATIONS

- 812 square foot Hive Library building that can accommodate 40 seated guests or 60 for cocktails
- 900 square foot connected outdoor patio
- 24-foot copper top bar and under-counter refrigerators
- Gas fireplace
- 10' w x 8' patio doors that open directly to the garden and patio
- 2,000 sq ft graded gravel parking for catering and production adjacent to the building
- Access to a 300 sq ft conference room or satellite office located on second floor
- Two modern bathrooms with multiple stalls that easily accommodate larger events
- The library has Wi-Fi and is ADA-accessible
- State of the art HVAC

The Perch

The Perch is a classic modern winery and tasting room with vaulted and wood-beamed ceilings. The open floorplan overlooks a winemaker's area with a large brick hearth and a butler's kitchen with an adjoining suite for any special occasion. The glass-framed patio doors open a deck that seamlessly steps into a three-acre lawn with carefully selected trees, pollinator gardens, and wildflower plantings. This flexible space accommodates a variety of events, including product launches, corporate retreats, cocktail parties, receptions, and weddings. It has abundant natural light and garden views that inspire guests' curiosity to wander and enjoy Meadowlark's open spaces.





ACCOMODATIONS

- 1050 square foot interior space can accommodate
 - 120 seated at 15, 60" round tables
 - 175 standing
- 1,550 square foot extended outdoor deck
 - 64 seated at 8, 60" round tables
 - 175 standing
- 24' of glass patio doors that open directly to outdoor deck
- Wood burning fireplace
- Two spacious bathrooms
- Lighted outdoor walkway from parking area to the Perch Winery building
- 20' x 40' cement area for catering and garage door entrance to the building
- Onsite parking for 100 vehicles
- The Perch has Wi-Fi and is ADA-accessible
- State of the Art HVAC
- Access to a 40' x 80' cement terrace that has an independent power station located eighty-five feet from the Perch Building on the lawn.
- 1000 square foot production/office area on the parking level

The background features several yellow dahlia flowers in the corners, rendered in a sketchy, line-art style. A central illustration of a dahlia stem with three buds is positioned behind the main title.

MEADOWLARK

NORTH FORK

Thank you

CONTACT: John Maroney John@macariwines.com or Nicole Nettles Nicole@macariwines.com